

THYROID GLAND ANATOMY

By - Dr. Jineshwar A. Yaligouda

M.D.

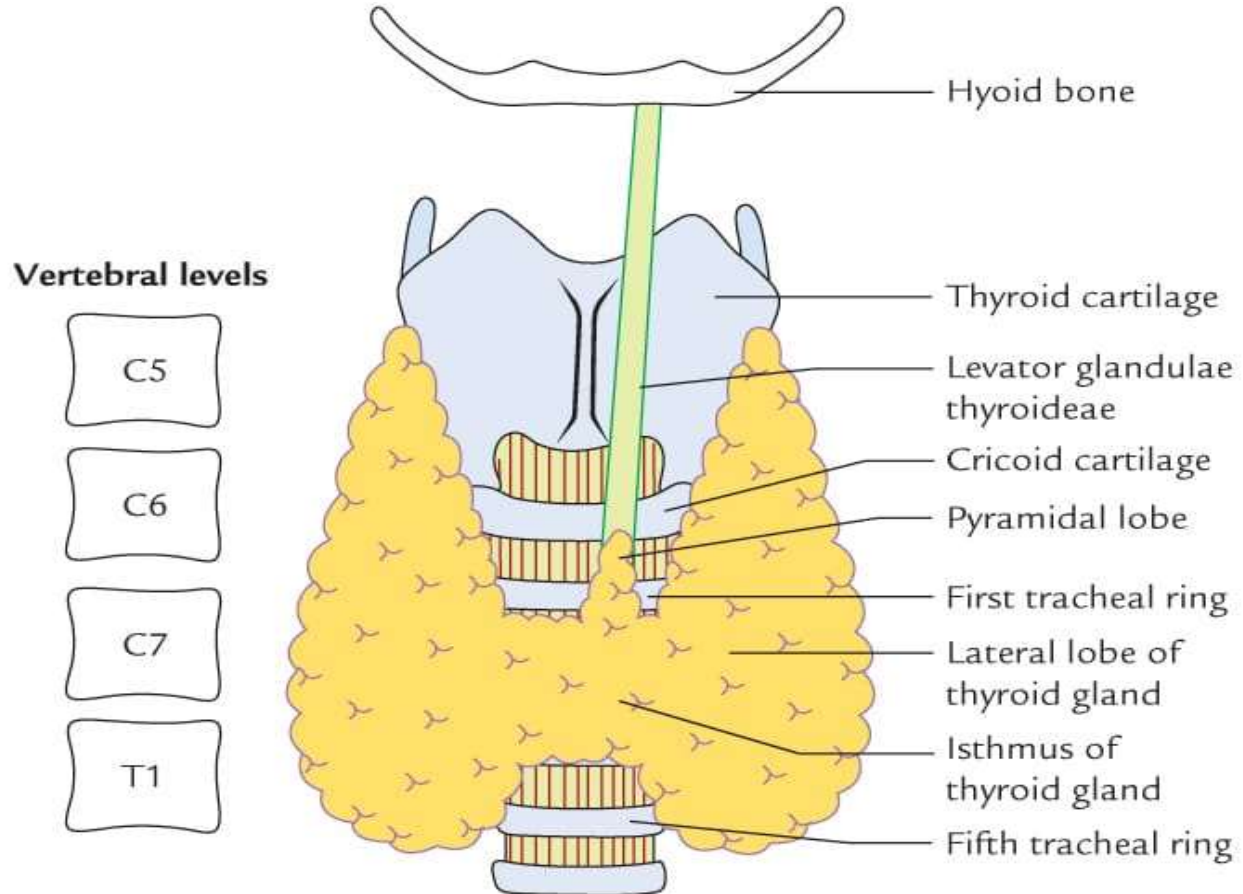
Professor & H.O.D Anatomy

Gulabrao Patil Homoeopathic Medical

College Miraj, Sangli.

Maharashtra State

• THYROID GLAND ANATOMY





WE ARE GOING TO STUDY UNDER
FOLLOWING HEADS

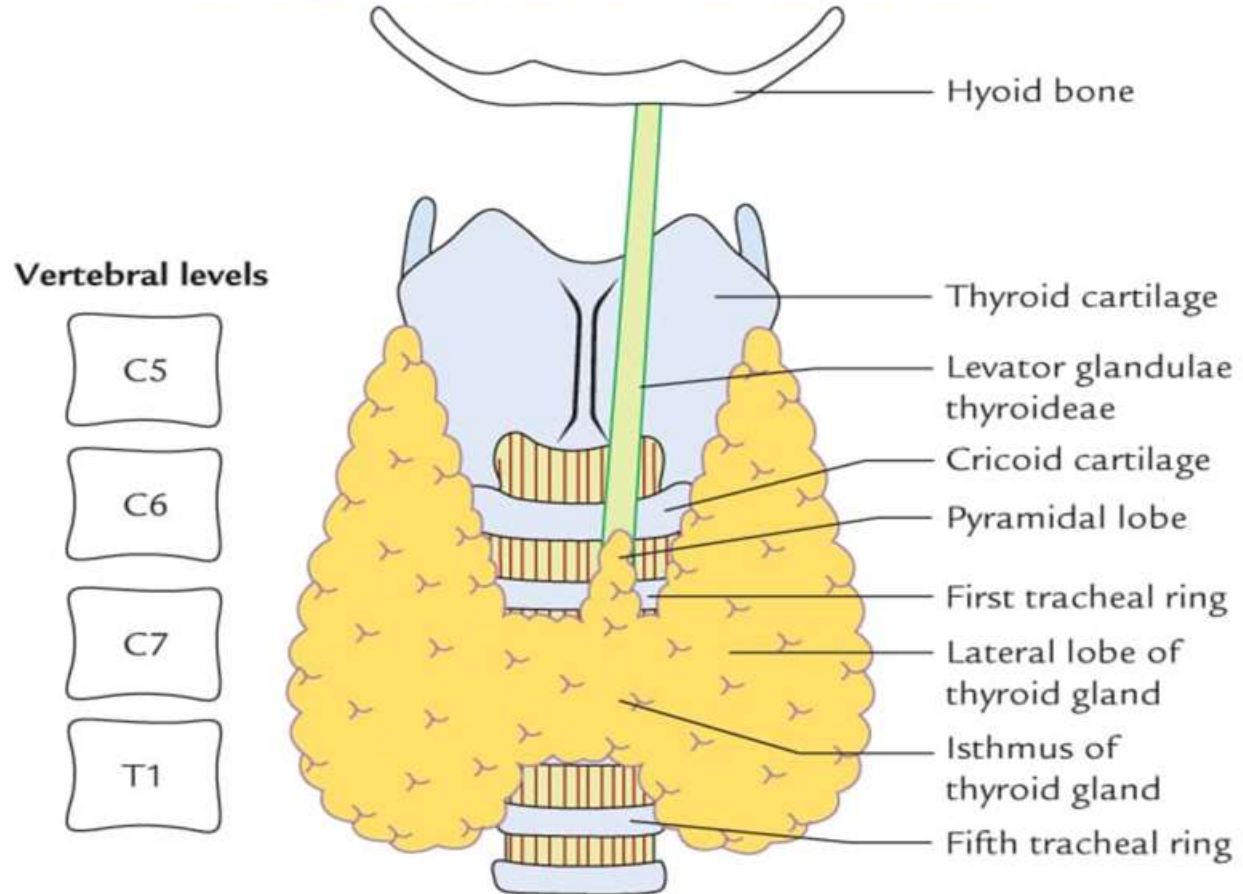
- **1) INTRODUCTION**
- **2) GENERAL FEATURES**
- **3) LOCATION AND EXTENT**
- **4) DIMENSIONS AND WEIGHT**
- **5) CAPSULE OF THYROID**
- **6) RELATIONS**



WE ARE GOING TO STUDY UNDER
FOLLOWING HEADS

- **7) BLOOD SUPPLY & VEINOUS DRAINAGE**
- **8) LYMPHATIC DRAINAGE**
- **9) NERVE SUPPLY**
- **10) STRUCTURES AND FUNCTIONS**
- **11) CLINICAL ANATOMY**

• THYROID GLAND ANATOMY



DIMENSIONS AND WEIGHT

EACH LOBES MEASURES ABOUT

Length -5 cm

Transverse Diameter -3 cm

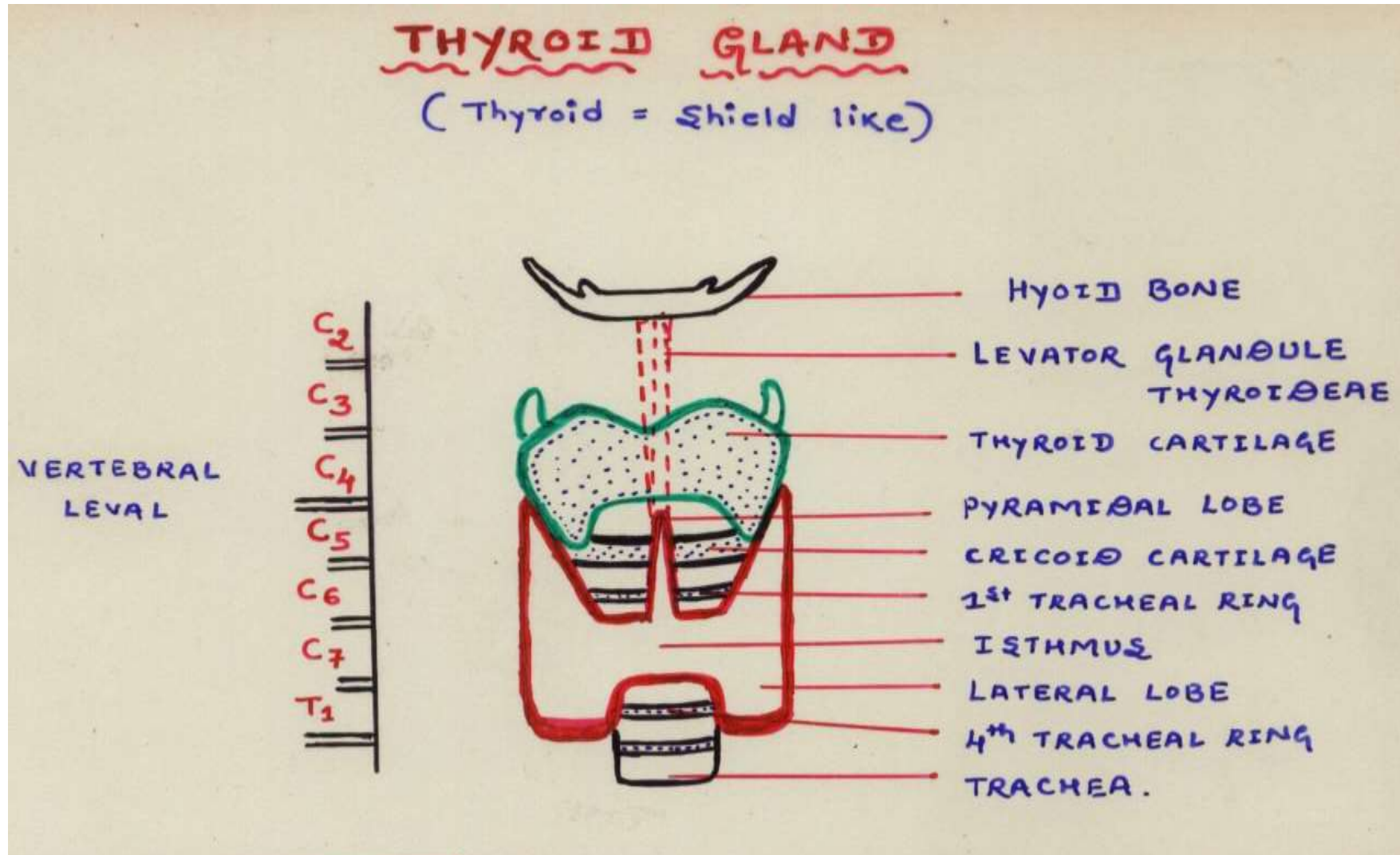
Anteroposterior Diameter -2 cm

Weight -25 grms

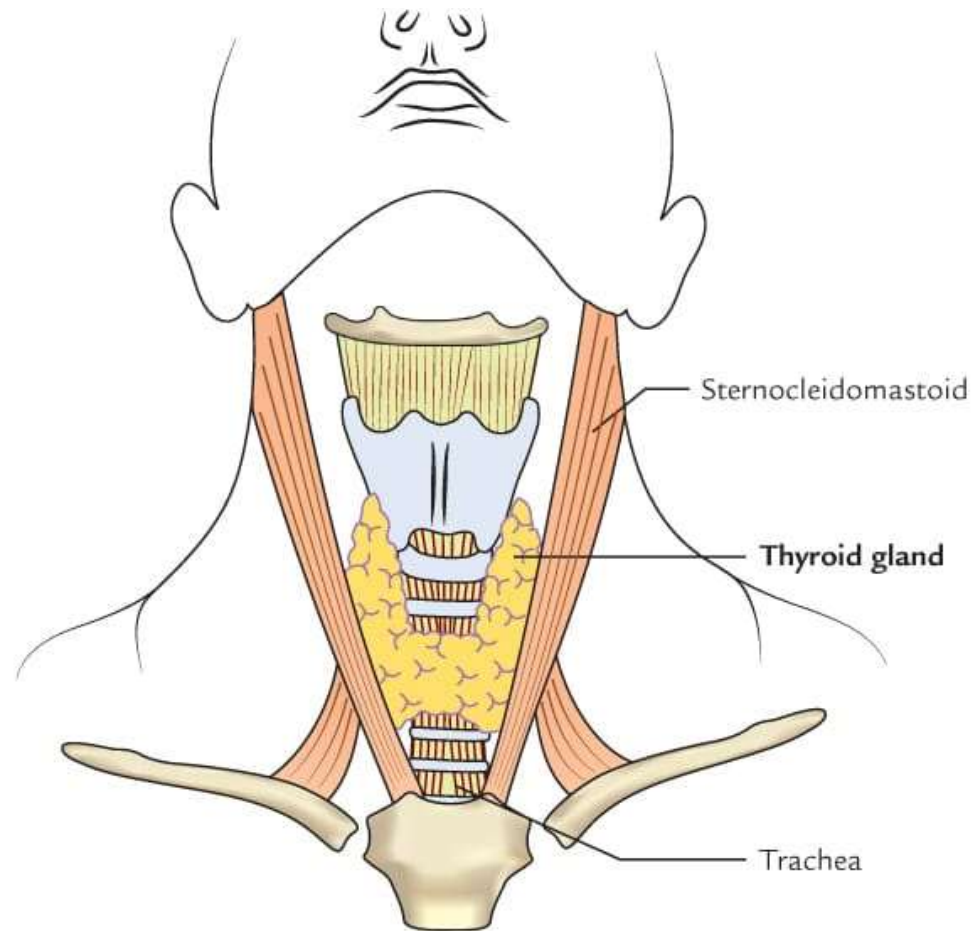
ISTHMUS

1.2 cm X 1.2 cm

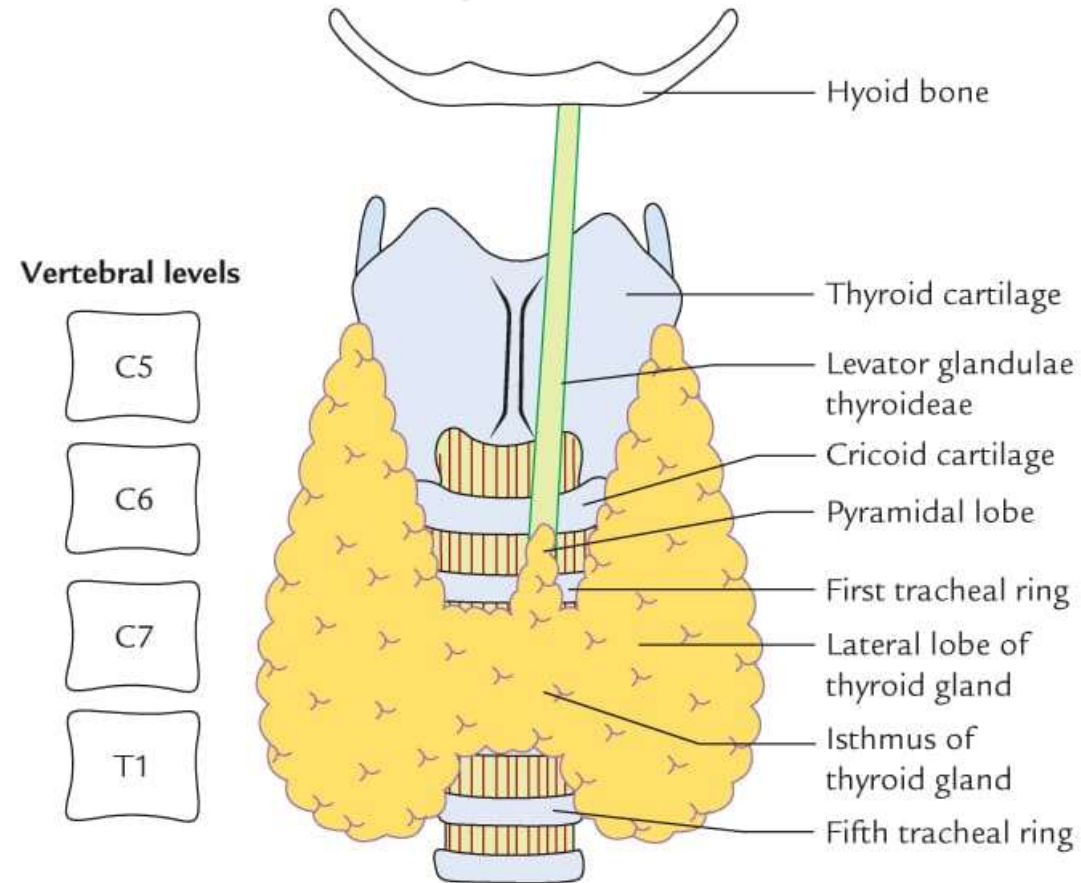
INTRODUCTION AND FUNCTION



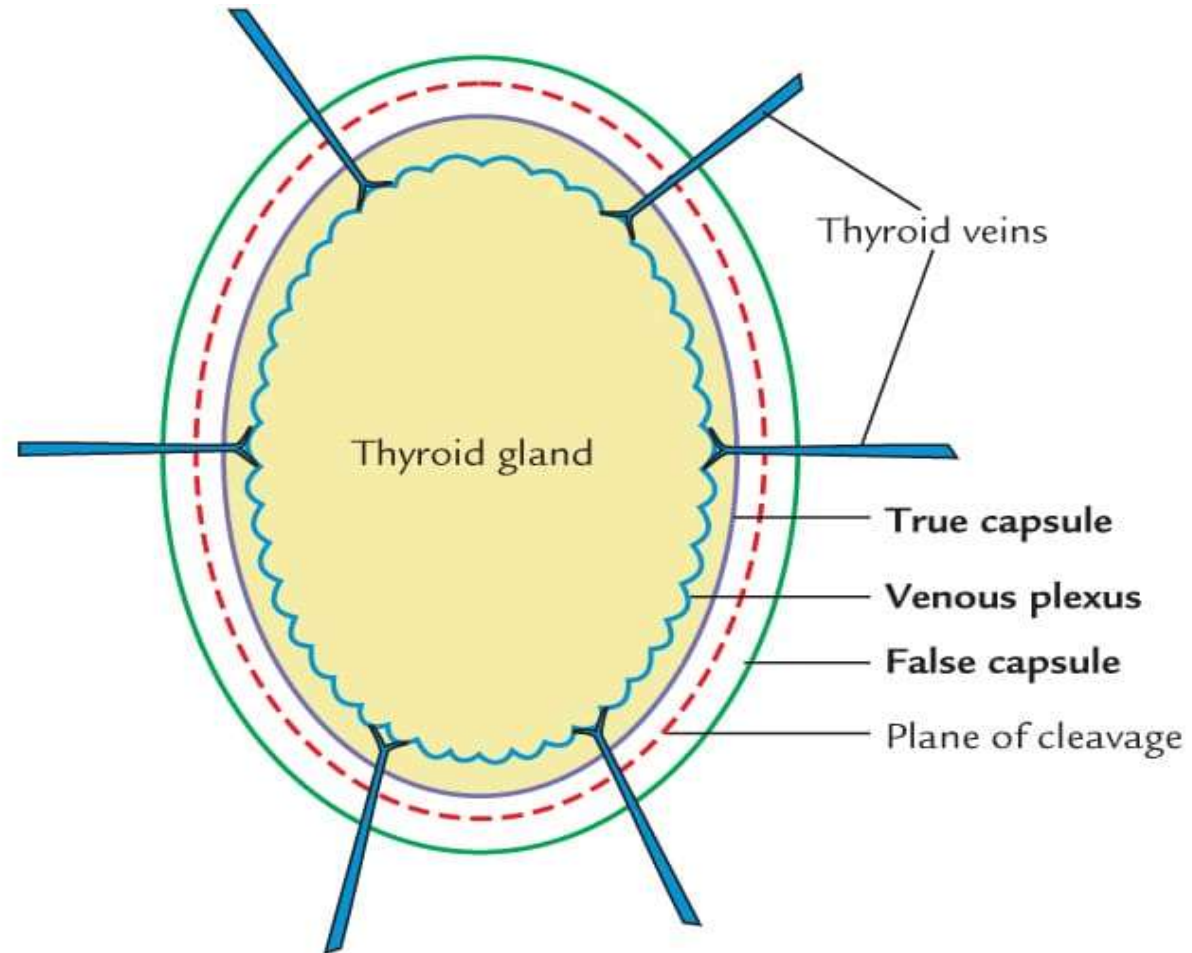
LOCATION AND SITUATION OF THE THYROID GLAND



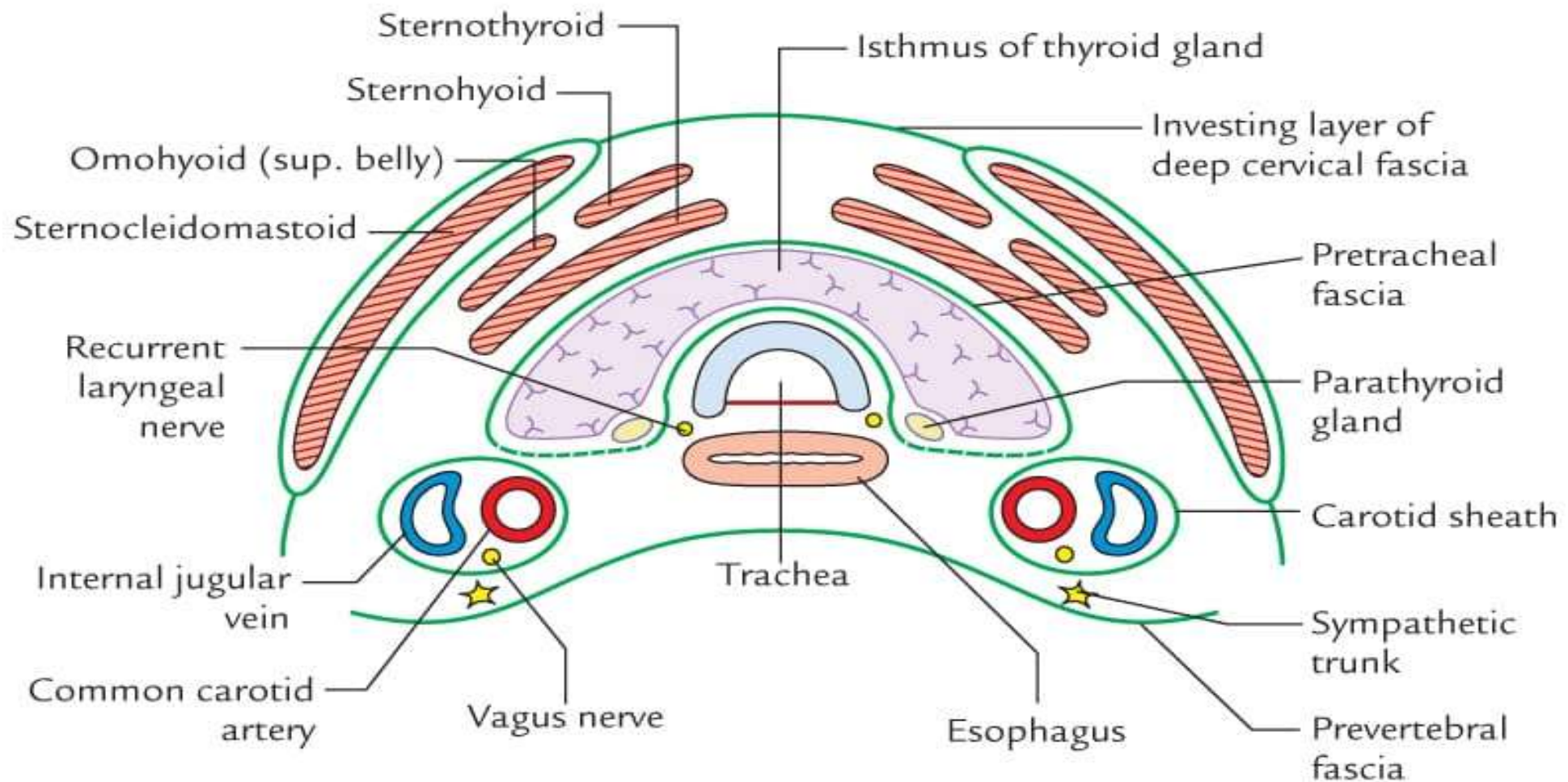
PARTS AND EXTENT OF THE THYROID GLAND



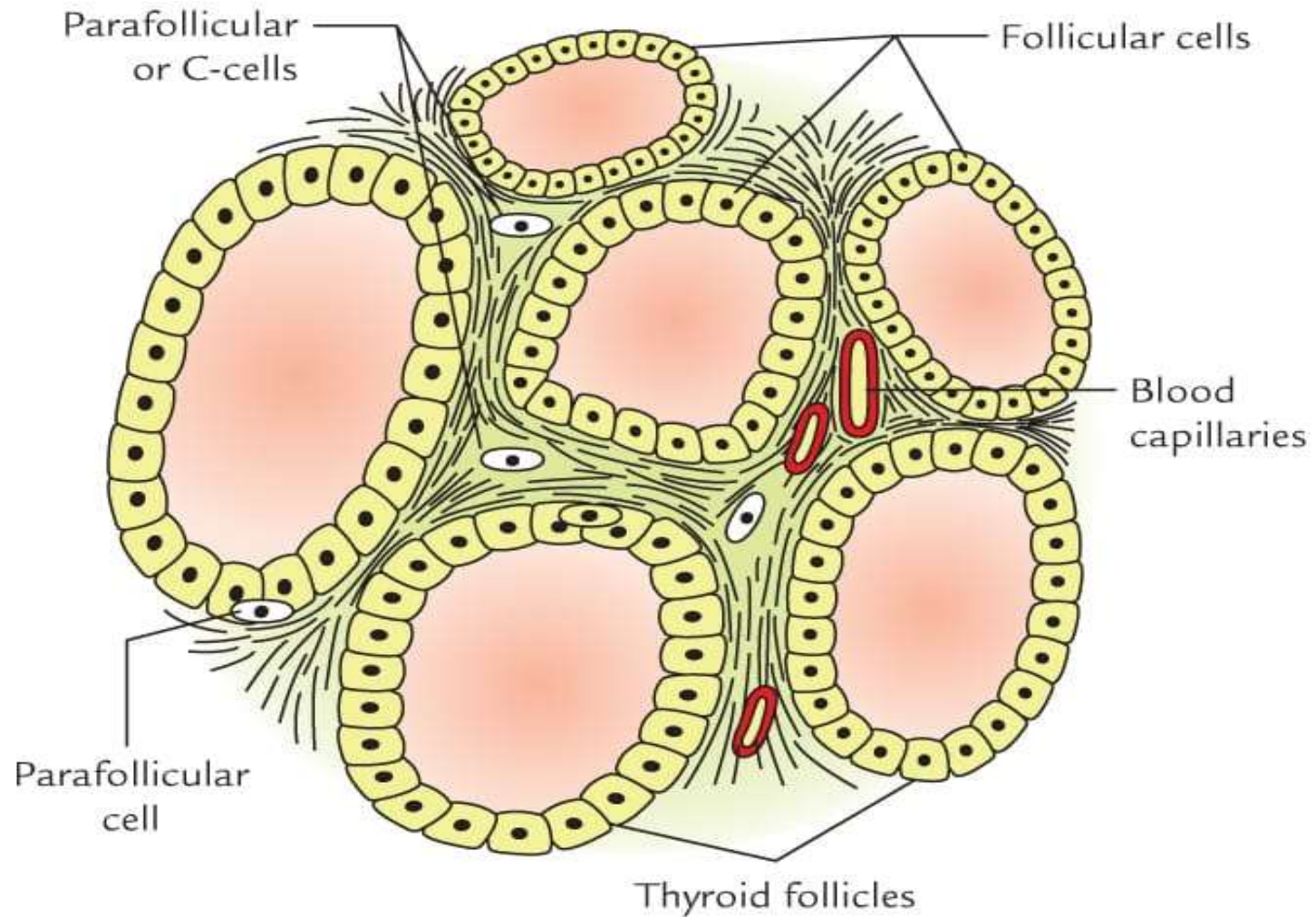
CAPSULES OF THE THYROID GLAND



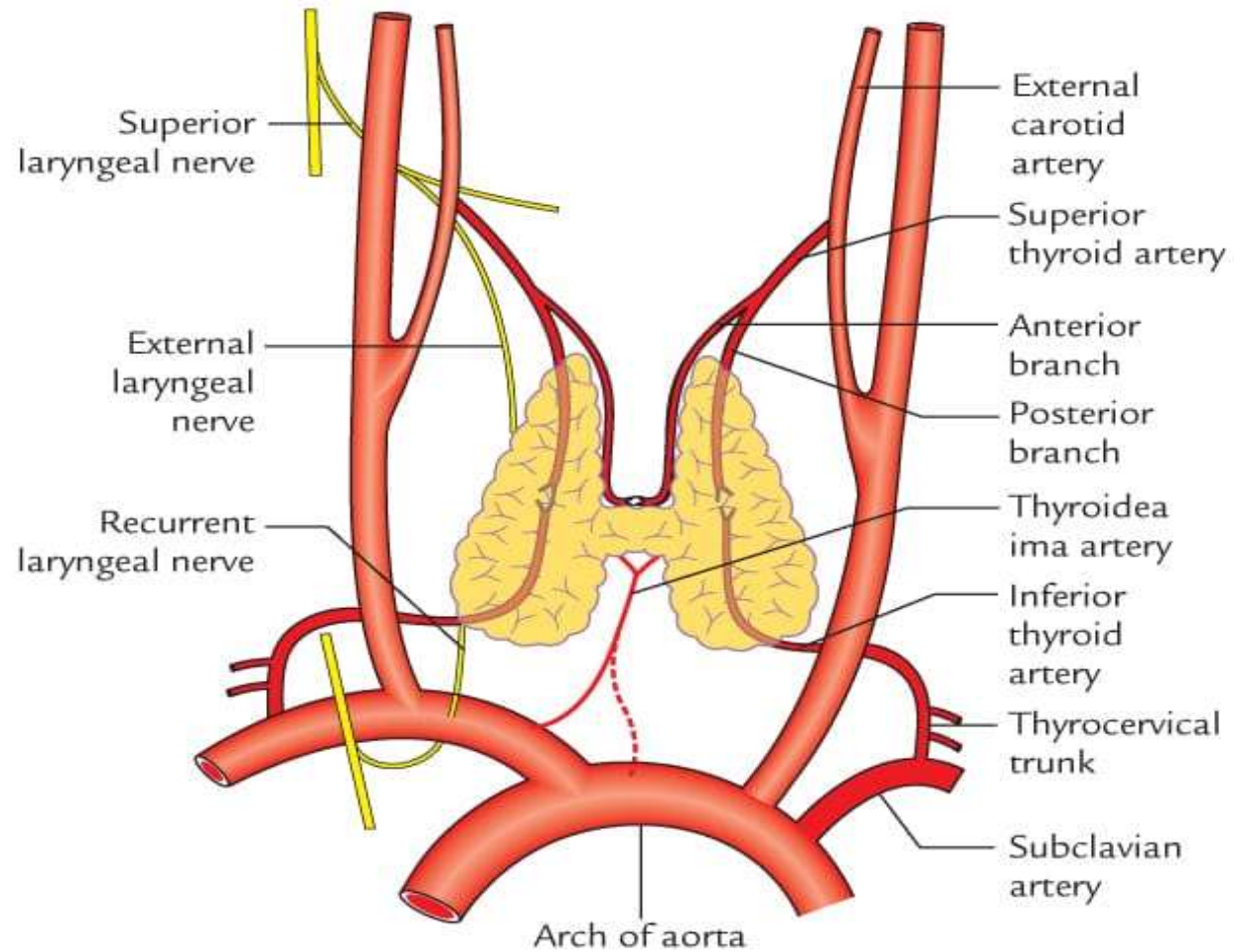
RELATIONS OF THE THYROID GLAND



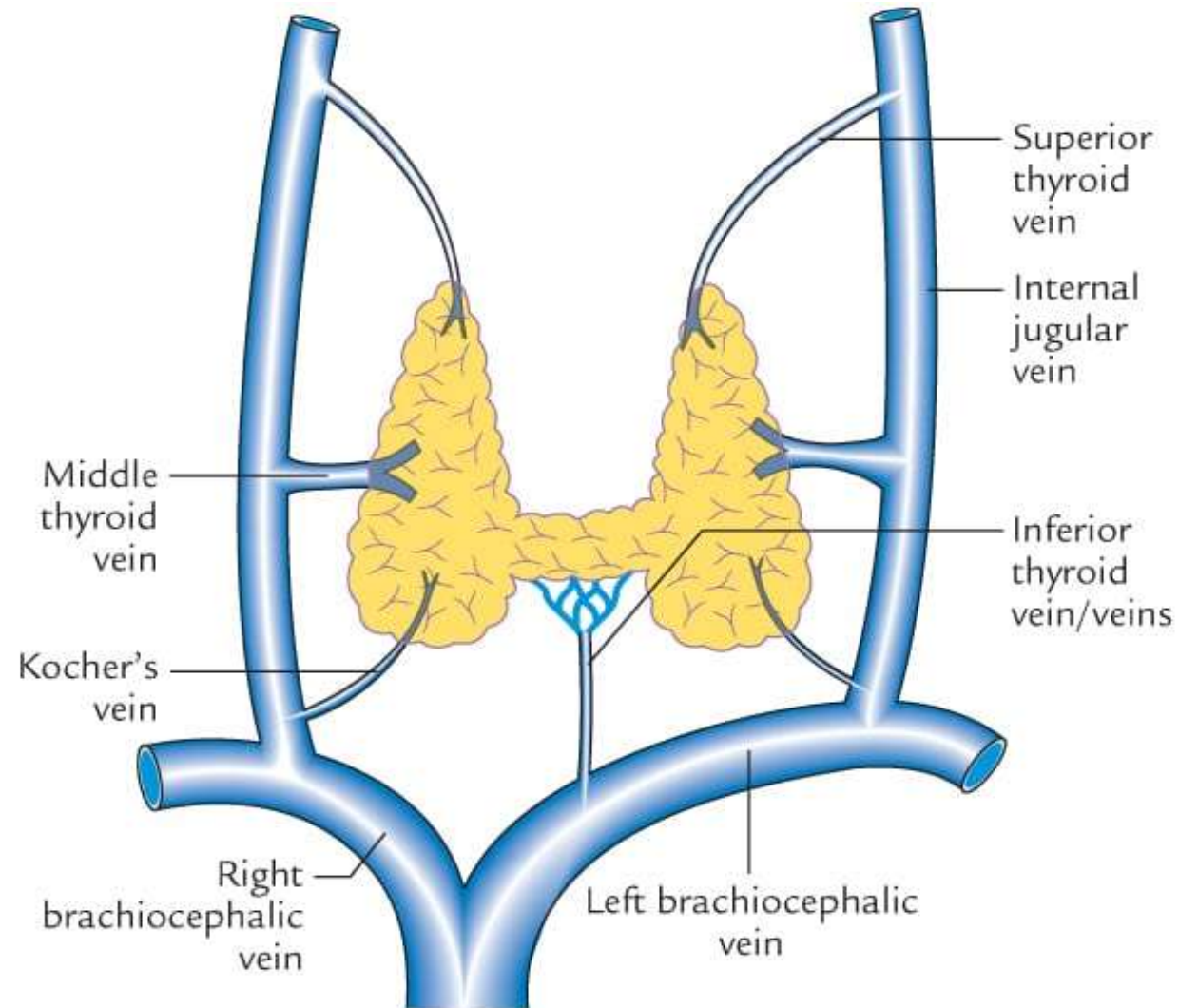
HISTOLOGY AND FUNCTION



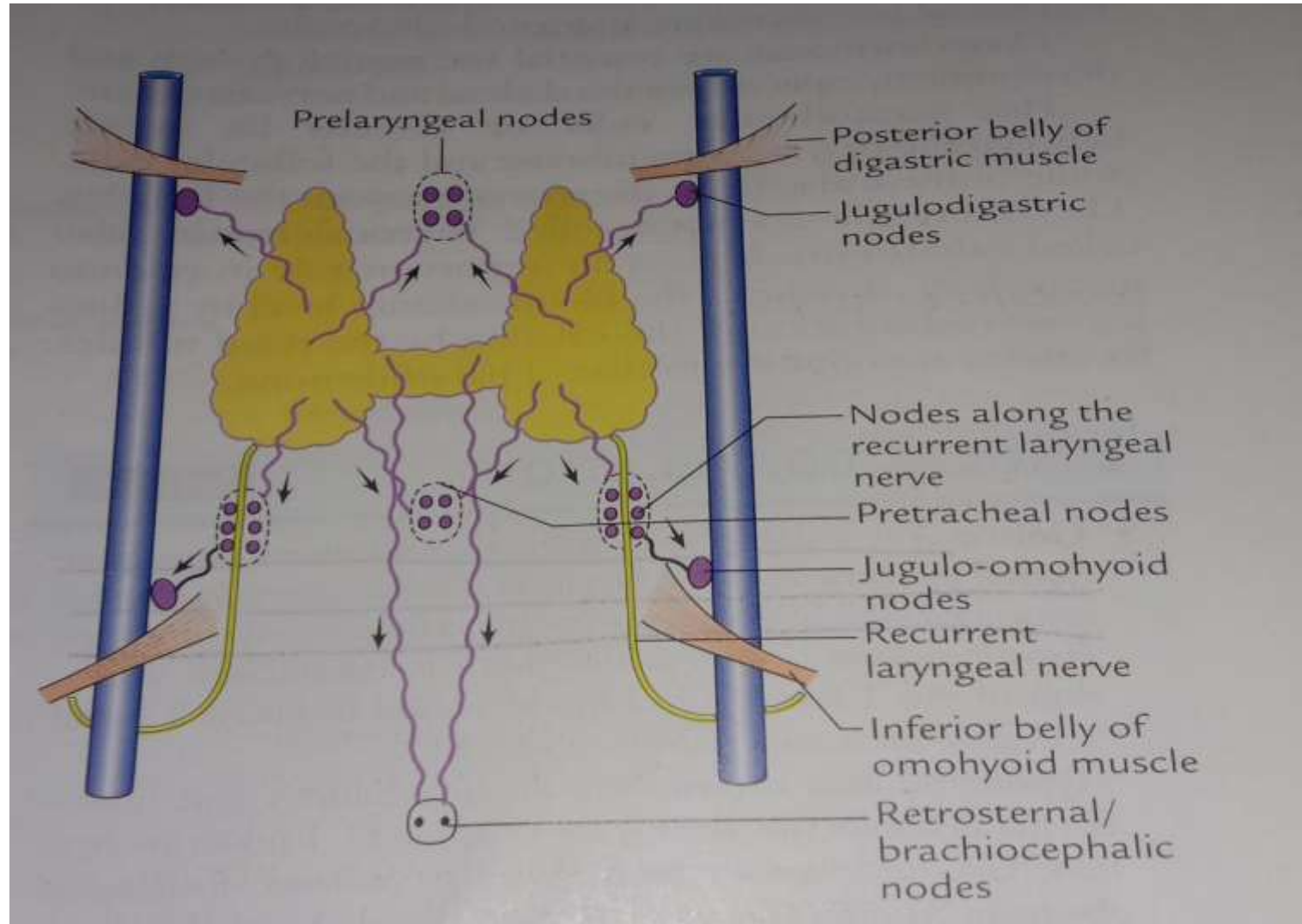
ARTERIAL SUPPLY OF THE THYROID GLAND



VENOUS DRAINAGE OF THE THYROID GLAND



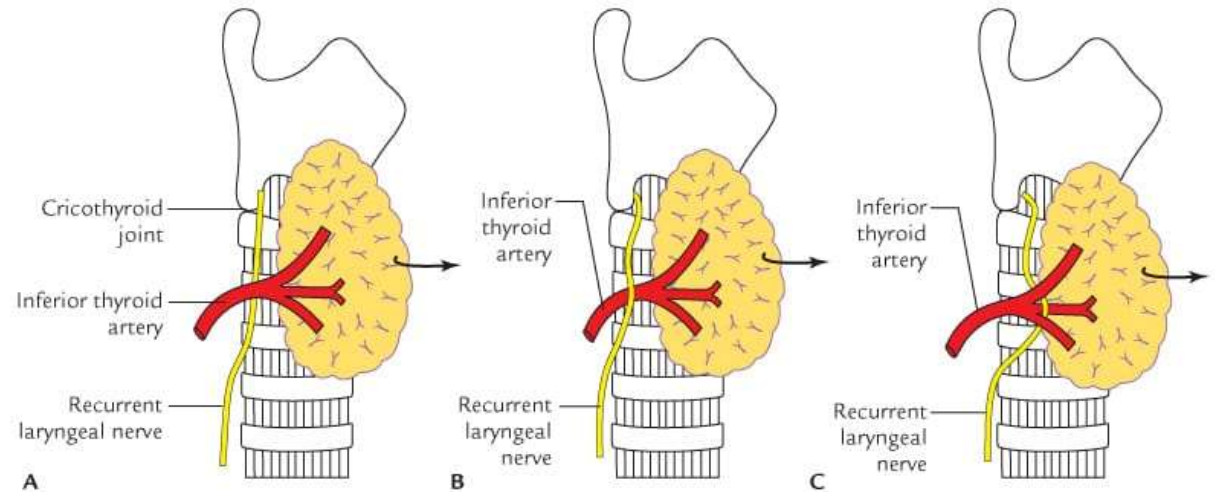
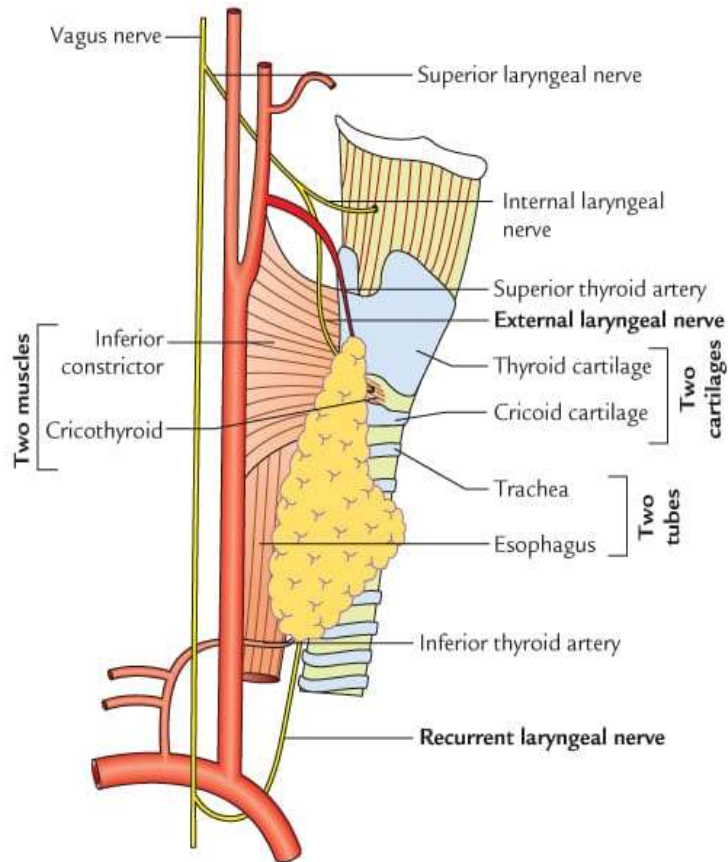
LYMPHATIC DRAINAGE OF THYROID GLAND



NERVE SUPPLY OF THE THYROID GLAND

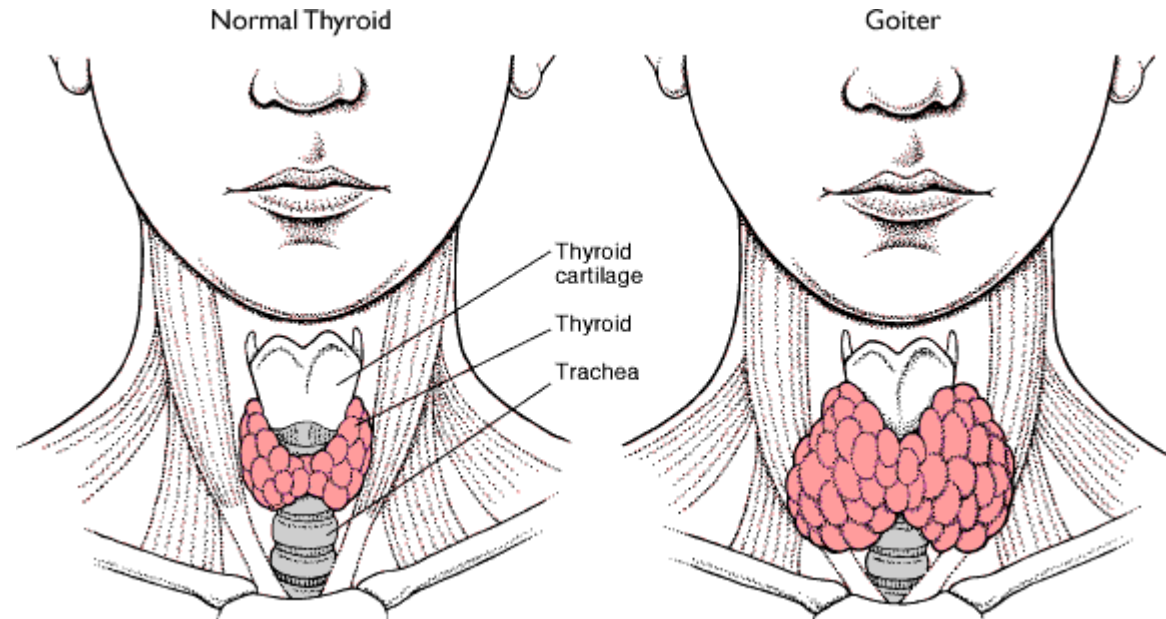
SUPERIOR, MIDDLE & INFERIOR

CERVICAL SYMPHATHATIC GANGLION



Clinical Anatomy :

GOITRE





HYPERTHYROIDISM

Tachycardia

Tremor

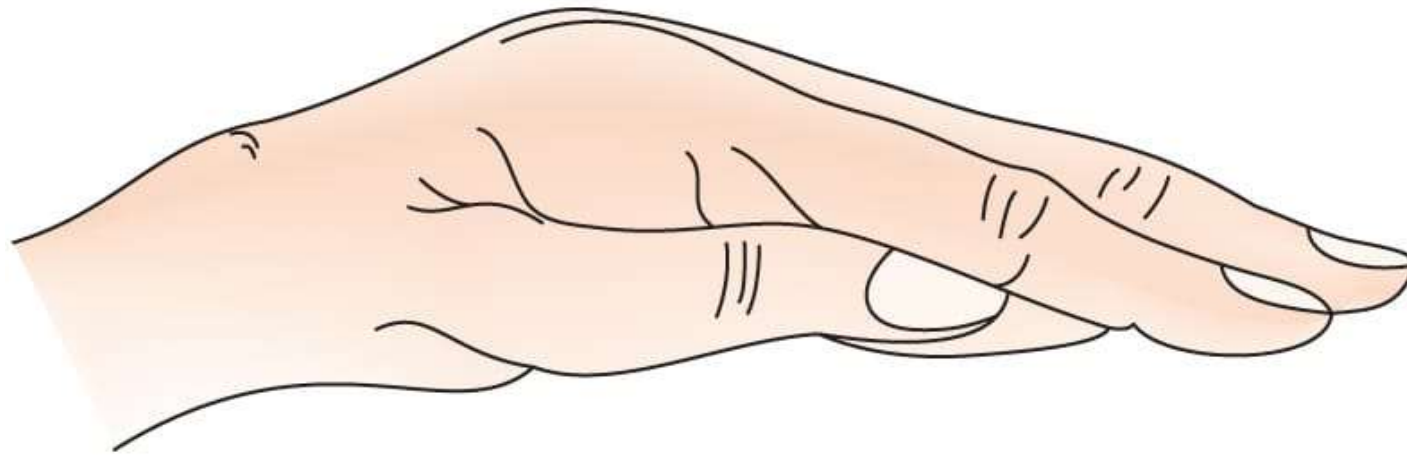
Increased BMR

HYPOTHYROIDISM

- **Myxoedema in Adult**
- **Cretinism in Children**

- **Malignant growth of Thyroid Gland**
- **Pressure symptoms**

TETANY





**THANK
YOU
SO MUCH
B JAIN PUBLISHERS**